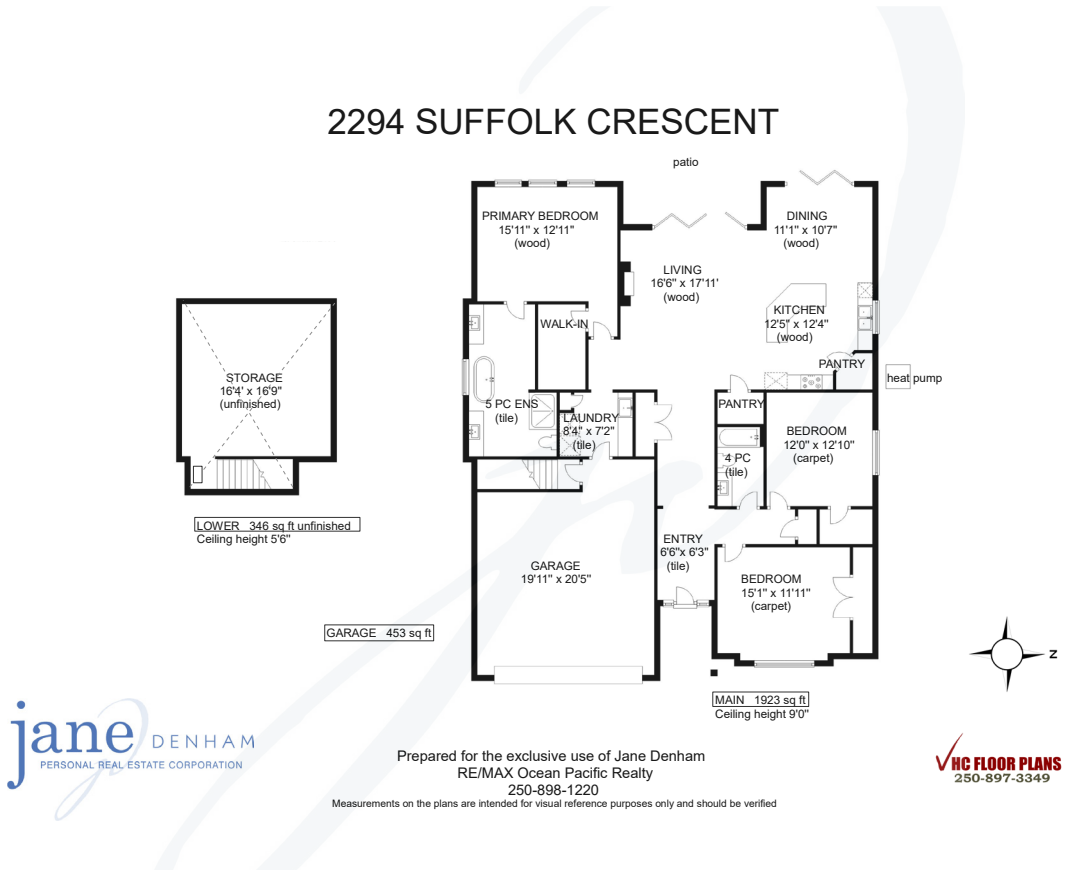
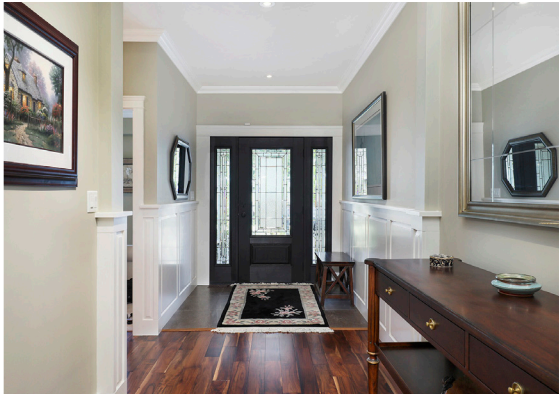


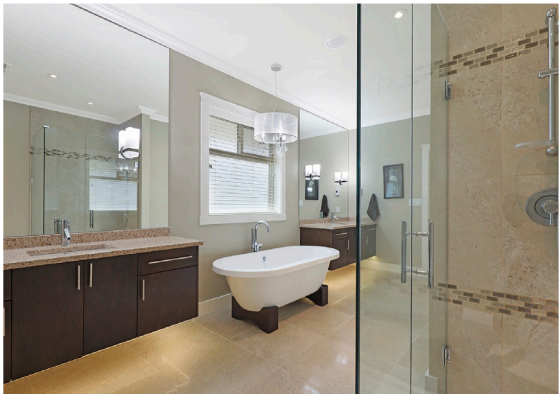


2294 Suffolk Crescent



Luxurious living on a quiet crescent in Crown Isle...

Luxurious living on a quiet crescent in Crown Isle Golf Resort and Community. Articulating patio doors offer an extension of your living space from both living and dining rooms to the private back yard with west exposure. Relax and reset in this oasis with the soothing sounds of the water feature & pond, 7 palm trees and fruit bearing banana plants. Built in 2014, w/ a 10 yr Warranty, this stunning design incorporates exquisite craftsmanship and refined elegance for comfort without compromise. Streaming sunlight highlights this bright open concept, 1,923 sf, 3 BD/ 2 BA. Acacia hardwood, wainscoting, leaded ½ glass front door & sidelights, 2 guest rooms located at the front east wing, and the primary bedroom & gorgeous 5 pce ensuite in the West wing. Beautifully designed kitchen w/ island and s/s appliances, 2 pantries, abundant storage throughout w/ brilliant closet organizers, and ~ 500 bottle wine storage in 5' partial crawl space. H/W on demand, heat pump, eff. gas fireplace.



2294 Suffolk Crescent | Listed at \$945,000

MLS #: 876521 | 3 Bedrooms | 2 Bathrooms

Fin. SqFt: 1,923
Garages: double
Lot Size: 0.14 acres
Year Built: 2013
Zoning: CD-1G

Please use the link below for property photos, virtual tour & video:
<https://www.janedenham.com/property/2294-suffolk-crescent/>



c 250.898.1220
jane@janedenham.com
www.janedenham.com



RE/MAX

ocean pacific realty

Each Office Independently Owned and Operated

b 250.339.2021
tf 888.829.7205
282 Anderton Rd.
Comox BC V9M 1Y2