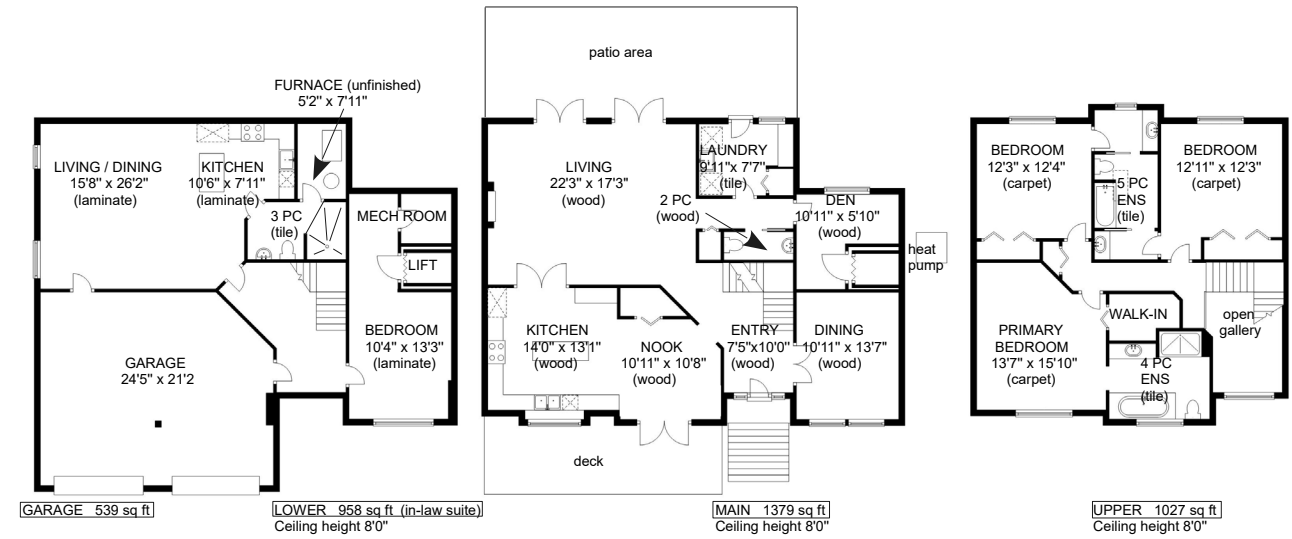




1651 Swan Crescent



1651 SWAN CRESCENT



	FINISHED SQ FT	UNFINISHED SQ FT	TOTAL SQ FT
UPPER	1027	0	1027
MAIN	1379	0	1379
LOWER	958	55	1013
TOTAL	3364	55	3419
GARAGE	0	539	539



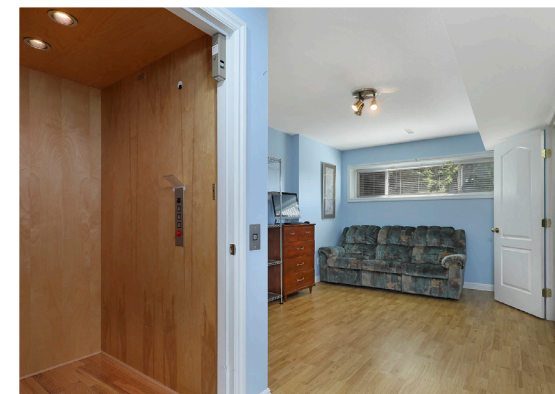
Prepared for the exclusive use of Jane Denham
RE/MAX Ocean Pacific Realty
250-898-1220

Measurements on the plans are intended for visual reference purposes only and should be verified



Majestic in stature, this spectacular home...

Majestic in stature, this spectacular home offers expansive views and a self contained, fully accessible in-law suite with elevator access from lower level to main floor. This immaculate home offers an abundance of space for family and multi-generational living with 3,364 sf, 4 BD/ 4 BA. Bright white kitchen boasting fantastic views with working island, pantry, oak flooring, breakfast nook, and French door access to the spacious front deck, perfect for morning coffee or sunset cocktails. Formal living and dining spaces showcase cozy gas fireplace, and dbl French doors that open to the partially covered back patio and gardens, fully fenced with plum, apple & pear trees. Upstairs the primary bedroom and vaulted ensuite offer spectacular eastern views to the inland mountains, and 2 additional bedrooms share Jack & Jill bathroom. The lower level is a flexible plan with wheelchair accessibility, or family room and extra bedroom. Gas furnace, Heat Pump, roof 5 yrs, washer & dryer 3 yrs.



1651 Swan Crescent | Listed at \$995,000

MLS #: 883247 | 4 Bedrooms | 4 Bathrooms

Fin. SqFt: 3,364

Unfin. SqFt: 55

Total SqFt: 3,419

Garages: 2

Lot Size: 0.20 acres

Year Built: 1997

Zoning: R-1

Please use the link below for property photos, virtual tour & video:
<https://www.janedenham.com/property/1651-swan-crescent/>



c 250.898.1220
jane@janedenham.com
www.janedenham.com



RE/MAX[®]

ocean pacific realty

Each Office Independently Owned and Operated

b 250.339.2021
tf 888.829.7205
282 Anderton Rd.
Comox BC V9M 1Y2