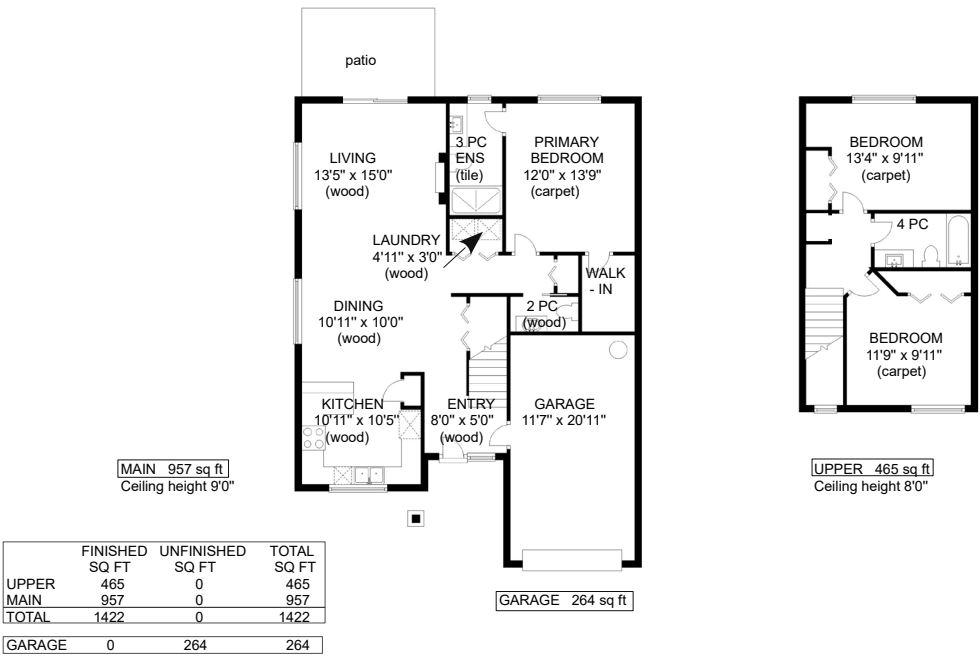




23-2030 Wallace Avenue



23 - 2030 WALLACE AVENUE



	FINISHED SQ FT	UNFINISHED SQ FT	TOTAL SQ FT
UPPER	465	0	465
MAIN	957	0	957
TOTAL	1422	0	1422
GARAGE	0	264	264

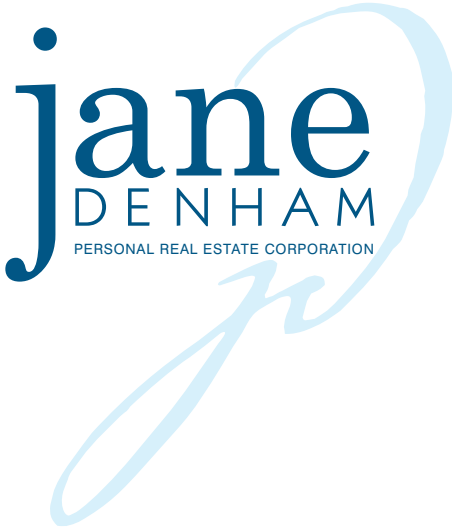
jane DENHAM
PERSONAL REAL ESTATE CORPORATION

Prepared for the exclusive use of Jane Denham
RE/MAX Ocean Pacific Realty
250-898-1220
Measurements on the plans are intended for visual reference purposes only and should be verified



Welcome to Spencer Estates, luxury townhomes...

Welcome to Spencer Estates, luxury townhomes within easy walking distance to the quaint seaside community of Comox. With primary bedroom on the main floor, this is one of six accessible units in this development. Originally the developer's own unit, offers privacy and beautiful morning sun on the back patio and a flagstone front patio to capture the evening sunsets. This corner end unit of 1,422 sf, 3 BD/ 3 BA, offers primary bedroom on main with contemporary ensuite frameless glass & tile shower, and huge walk-in closet. Main floor offers 9' ceilings, spacious open plan Great room with hand scraped engineered hardwood flooring, electric fireplace, sliding door access to fenced yard and patio. A well-designed kitchen with large window over the sink with a garden view, dark s/s appliances and abundant storage space in pantry. Full sized washer/dryer on main floor, 2 pce powder room and generous single car garage. Upstairs 2 bedrooms and 4 pce bath. Great tenants, month to month.



23-2030 Wallace Avenue | Listed at \$649,000

MLS #: 883646 | 3 Bedrooms | 3 Bathrooms

Fin. SqFt: 1,422
Garages: 1
Strata Fees: \$275 / mth
Year Built: 2016
Zoning: CD-19

Please use the link below for property photos, virtual tour & video:
<https://www.janedenham.com/property/23-2030-wallace-avenue/>



c 250.898.1220
jane@janedenham.com
www.janedenham.com



RE/MAX®

ocean pacific realty

Each Office Independently Owned and Operated

b 250.339.2021
tf 888.829.7205
282 Anderton Rd.
Comox BC V9M 1Y2