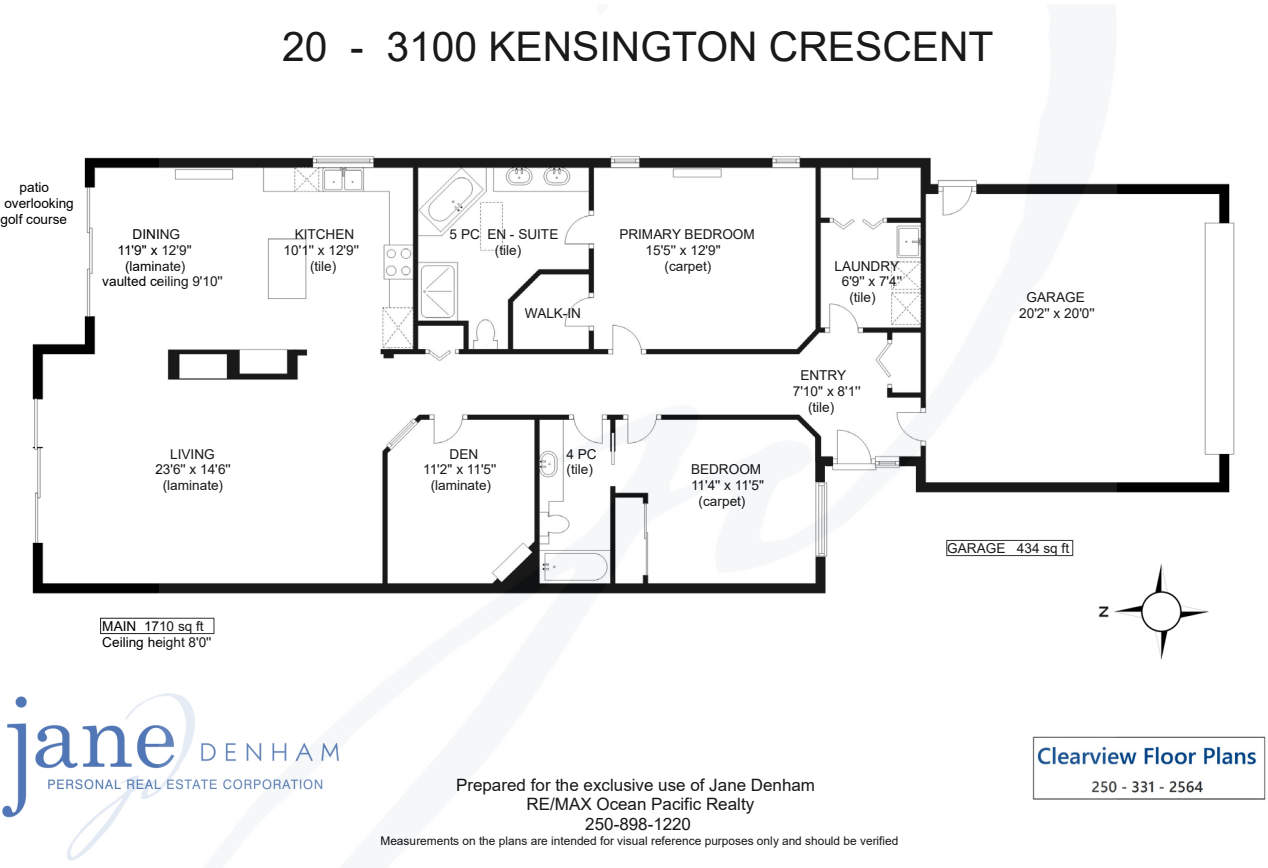


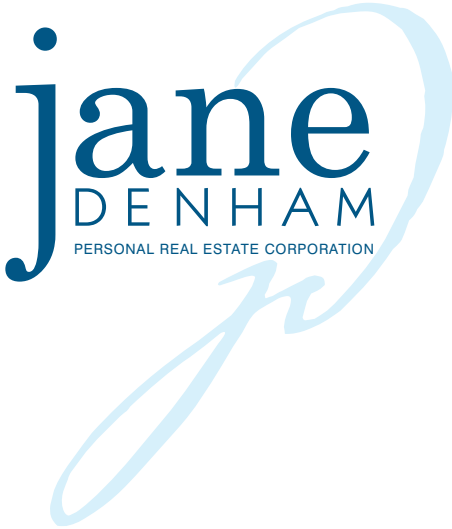


20-3100 Kensington Crescent



Turn-key living at Crown Pointe...

Watch the golfers hit a long drive on the 11th fairway of Crown Isle’s Platinum rated golf course. Sunset cocktails and morning coffee, life is better here... Turn-key living at Crown Pointe, a small community of well-appointed patio homes nestled between the 11th, 13th, and 16th fairways. A well-run strata with newer roofs ~5 yrs old, exterior paint 2021, and community clubhouse for social gatherings. This spacious layout of 1,710 sf, 2 BD/ 2 BA, plus den offers 2 gas fireplaces, in den and Great room for ambient, efficient heating. Granite counters in the kitchen, abundant counter space including an island with seating, sliding door access from the living and vaulted dining rooms to the expansive patio with BBQ hook up. Master suite offers a large ensuite w/skylight, soaker tub, sep shower, dbl vanities. 2016 gas Rinnai boiler for radiant in-floor & hot water heating, 2 x split pumps for heating & A/C, 2 car garage, appliances 2019, 55+, no rentals. Furnishings & golf cart negotiable.



20-3100 Kensington Crescent | Listed at \$795,000

MLS #: 888296 | 2 Bedrooms | 2 Bathrooms

Total SqFt: 1,710

Garages: 2

Year Built: 1996

Zoning: CD-1B

Please use the link below for property photos, feature sheet & video:
<https://www.janedenham.com/property/20-3100-kensington-crescent/>



c 250.898.1220
jane@janedenham.com
www.janedenham.com



RE/MAX

ocean pacific realty

Each Office Independently Owned and Operated

b 250.339.2021
tf 888.829.7205
282 Anderton Rd.
Comox BC V9M 1Y2