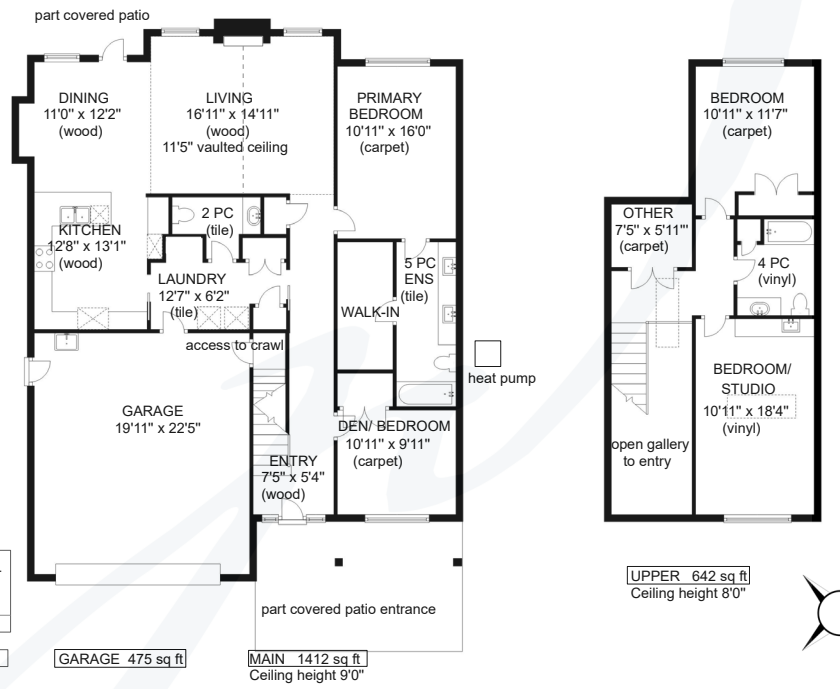




962 Prestwick Place



962 PRESTWICK PLACE



	FINISHED SQ FT	UNFINISHED SQ FT	TOTAL SQ FT
UPPER	642	0	642
MAIN	1412	0	1412
TOTAL	2054	0	2054

jane DENHAM
PERSONAL REAL ESTATE CORPORATION

Prepared for the exclusive use of Jane Denham
RE/MAX Ocean Pacific Realty
250-898-1220

Measurements on the plans are intended for visual reference purposes only and should be verified

Clearview Floor Plans
250 - 331 - 2564

Meticulously Maintained, Custom Built...

Meticulously maintained, custom built 2017, stunning home of 2,054 sf, 4 BD/ 3 BA, is located within walking distance of all amenities in Crown Isle's 'The Rise'. Traditional styling with a contemporary flare, this masterfully crafted open plan showcases a 20' ceiling in the front entry, vaulted ceiling in the Great room with engineered oak flooring, gas fireplace, granite rockwork, driftwood mantle & shiplap details. Spacious dining room offers backyard views with easy access to the covered patio. Bright white cabinetry in the kitchen provides abundant storage and workspace with quartz counters and s/s appliances. The primary bedroom is located on the main floor also w/ views of the beautifully landscaped yard, & luxurious 5 pce ensuite with 2 sinks, heated tile flooring, & generous walk-in closet. The upper-level front room designed as a studio w/ skylight & wet bar. 5' partial crawl space w/ stair access, heat pump, irrigation, New Home Warranty, Integra built. Gate to trails behind.



962 Prestwick Place | Listed at \$1,150,000

MLS #: 895312 | 4 Bedrooms | 3 Bathrooms

Total SqFt: 2,054

Garages: 2

Lot Size: 0.19 acres

Year Built: 2017

Zoning: CD-1A

Please use the link below for property photos, virtual tour & video:
<https://www.janedenham.com/property/962-prestwick-place/>



c 250.898.1220
jane@janedenham.com
www.janedenham.com



RE/MAX[®]

ocean pacific realty

Each Office Independently Owned and Operated

b 250.339.2021
tf 888.829.7205
282 Anderton Rd.
Comox BC V9M 1Y2