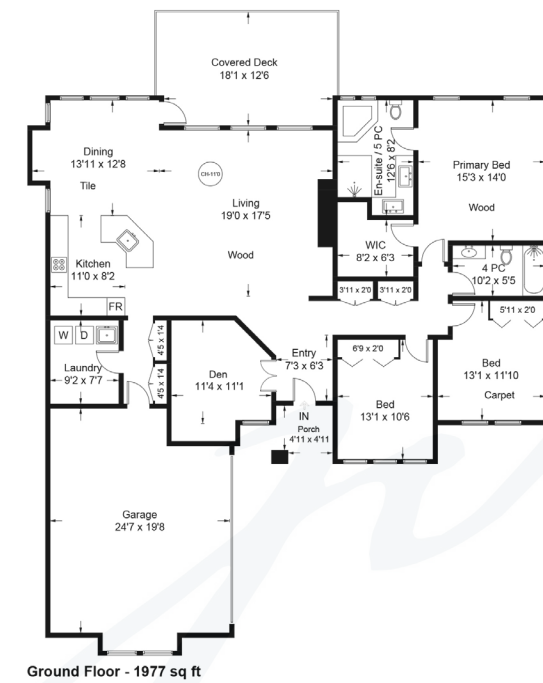




1648 Sussex Drive



1648 Sussex Drive
 Floor Area is calculated including the external walls (GEA).
 All measurements are approximate and the plan is for layout guidance only. Buyers should verify all measurements.

Floor	AREA (Sq. Ft.)		
	Finished	Unfinished	Garage
Ground	1977	0	507
Total	1977	0	507

Prepared for the exclusive use of Jane Denham
 RE/MAX Ocean Pacific Realty
 250-898-1220



LSPMedia

Exquisite Custom-Built Rancher...

Exquisite custom-built rancher in Crown Isle Golf Resort & Community. Located on a peaceful crescent with private yard, Southwest exposure, and backing onto greenspace with mature evergreens. Benco built in 2009 with exceptional craftsmanship, fine finishing, and meticulously maintained. This spacious open plan offers 1,977 sf, 3 BD/ 2 BA plus den at the front of the home with double French doors. The Great room boasts 11' ceilings, natural gas fireplace w/multi speed fan, oversized windows with streaming sunlight, and access to the expansive covered patio. Rich maple cabinets, granite counters, s/s appliances, a spacious island with seating for guests and a pantry, make this kitchen an entertainer's dream. Luxurious primary bedroom with 5 pce ensuite, dual sinks, separate glass shower and jetted tub. Maple hardwood flooring, Hot water on demand, Heat pump, concrete 'stacked stone' fencing, Hardie Plank, Tile roof, Shed. Close to shopping, the new Hospital and 5 min to the Airport.



1648 Sussex Drive | Listed at \$1,150,000

MLS #: 899301 | 3 Bedrooms | 2 Bathrooms

Total SqFt: 1,977
Garages: 2
Lot Size: 0.19 acres
Year Built: 2009
Zoning: CD-1G

Please use the link below for property photos, virtual tour & floor plan:

<https://www.janedenham.com/property/1648-sussex-drive/>



c 250.898.1220
jane@janedenham.com
www.janedenham.com



RE/MAX[®]

ocean pacific realty

Each Office Independently Owned and Operated

b 250.339.2021
tf 888.829.7205
282 Anderton Rd.
Comox BC V9M 1Y2