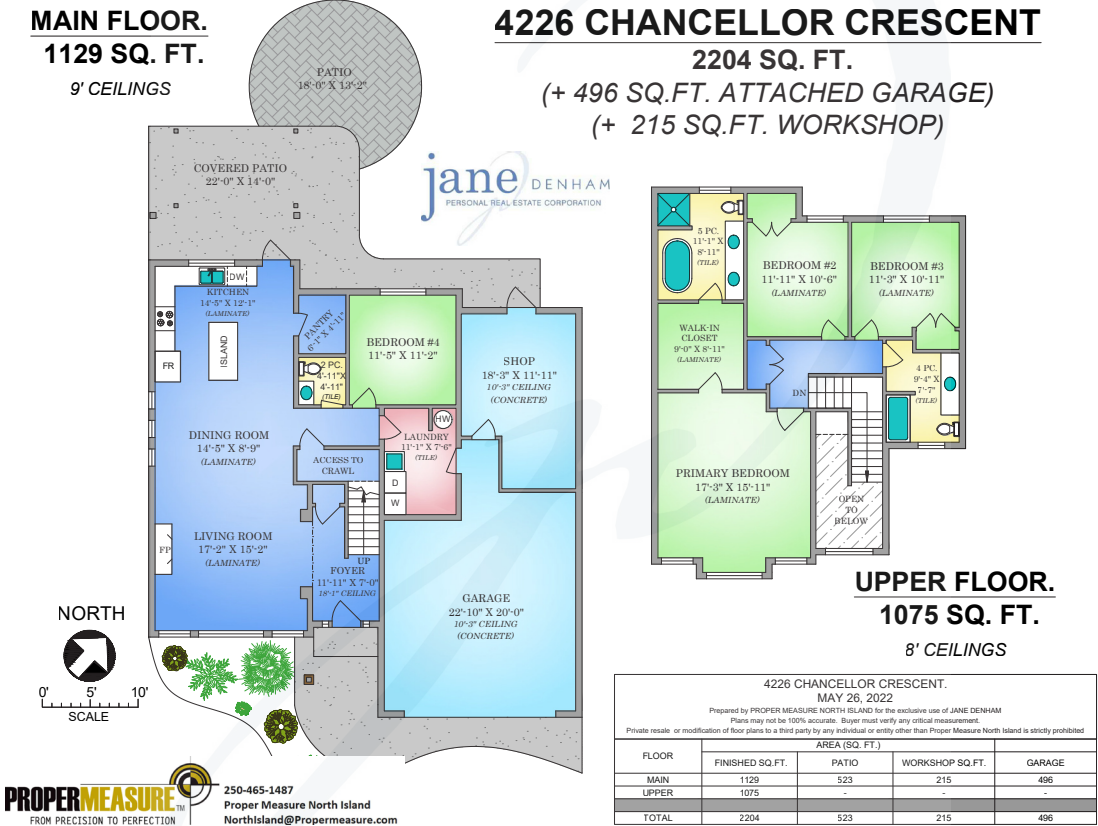




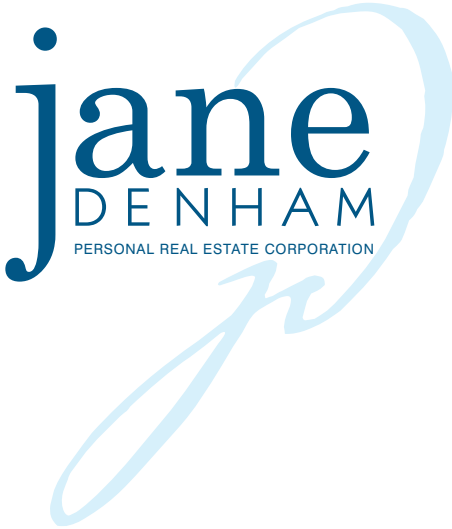
4226 Chancellor Crescent





Stunning Family Home Located at ‘The Ridge’...

Stunning family home located at ‘The Ridge’, a fabulous new development of well-appointed homes with parks and trails and wonderful ocean views across the Comox Harbour to the Coast Mountains. Spacious and bright, an open plan built in 2018 with 2,204 sf, 4 BD/ 3 BA. Sunlight streams through the beveled glass front door illuminating the front entry and soaring 18’ ceilings. Chic modern tones & natural elements create a wonderful space to relax and unwind. The great room and cozy gas fireplace provide a lovely ambience, dream kitchen with s/s appliances, a large quartz island with seating, pantry, and a window over the sink to watch the kids play. A covered pergola on the patio and level, fenced yard with raised beds to grow your veggies. With large windows and stunning views, the spacious primary bedroom offers a sweet retreat, & luxurious ensuite w/ 2 sinks, free standing tub, & tiled shower. The extra-large garage w/ 10’ ceilings offer 215 sf of shop/music room (wall easily removed).





4226 Chancellor Crescent | Listed at \$1,045,000

---

MLS #: 904647 | 4 Bedrooms | 3 Bathrooms

Total SqFt: 2,204

Garages: 2

Lot Size: 0.17 acres

Year Built: 2018

Zoning: CD-21

---

Please use the link below for property photos, virtual tour & floor plan:  
<https://www.janedenham.com/property/4226-chancellor-crescent/>



c 250.898.1220  
jane@janedenham.com  
www.janedenham.com



**RE/MAX**®

ocean pacific realty

Each Office Independently Owned and Operated

b 250.339.2021  
tf 888.829.7205  
282 Anderton Rd.  
Comox BC V9M 1Y2