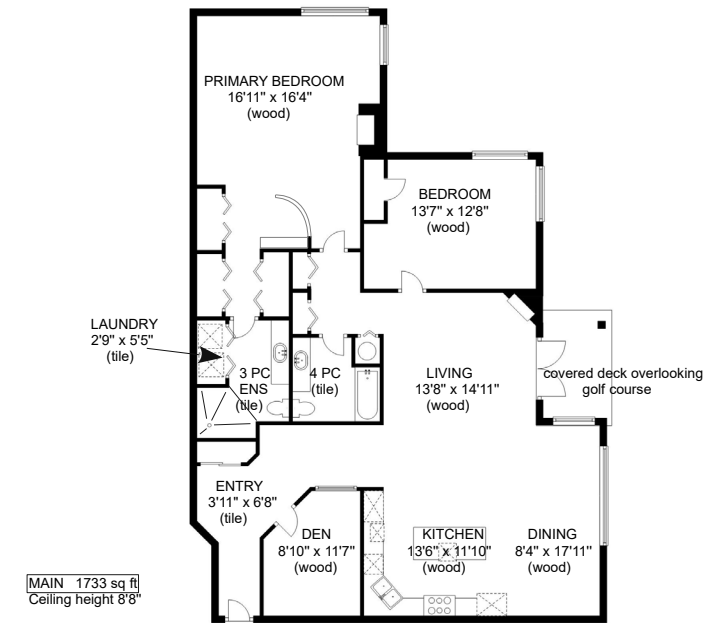




324-3666 Royal Vista Way



324 - 3666 ROYAL VISTA WAY



**jane DENHAM**  
PERSONAL REAL ESTATE CORPORATION

Prepared for the exclusive use of Jane Denham  
RE/MAX Ocean Pacific Realty  
250-898-1220  
Measurements on the plans are intended for visual reference purposes only and should be verified

**Clearview Floor Plans**  
250 - 331 - 2564



Premier condo at Corinthia Estates...

Premier condo at Corinthia Estates in Crown Isle! One of the largest units w/ 1,733 sf, 2 BD/ 2 BA plus den, a 2nd floor corner unit showcasing spectacular sunrise and golf course views across the ponds, the 3rd, 4th & 5th fairways. Stunning kitchen boasts upgraded custom cabinetry, sublime Thermadore appliances, 36" 6 burner gas cooktop, double oven, custom paneled fridge for a streamlined elegant look, Miele dishwasher, wine cooler, granite counters, a central island with seating. The spacious Great room offers the warmth and ambience of the gas fireplace, fabulous views and French door access to the covered deck ideal for morning coffee and evening cocktails. Gleaming hardwood flooring throughout, the spacious primary suite offers a sanctuary to relax & unwind w/ a reading/media corner, gas fireplace, glass block wrapped vanity, ensuite w/ fully tiled shower, heated floors, & laundry closet. Secure underground parking, triple storage locker, 1 dog or 1 cat, no smoking on property.



324-3666 Royal Vista Way | Listed at \$755,000

---

MLS #: 923048 | 2 Bedrooms | 2 Bathrooms

Fin. SqFt: 1,733

Strata Fees: \$571

Year Built: 2005

Zoning: CD-1B

---

Please use the link below for property photos & floor plan:

<https://www.janedenham.com/property/324-3666-royal-vista-way/>



c 250.898.1220  
jane@janedenham.com  
www.janedenham.com

Grace Denham-Clare  
c 250.897.8890  
grace@janedenham.com



**RE/MAX**<sup>®</sup>

ocean pacific realty

Each Office Independently Owned and Operated

b 250.339.2021  
tf 888.829.7205  
282 Anderton Rd.  
Comox BC V9M 1Y2