

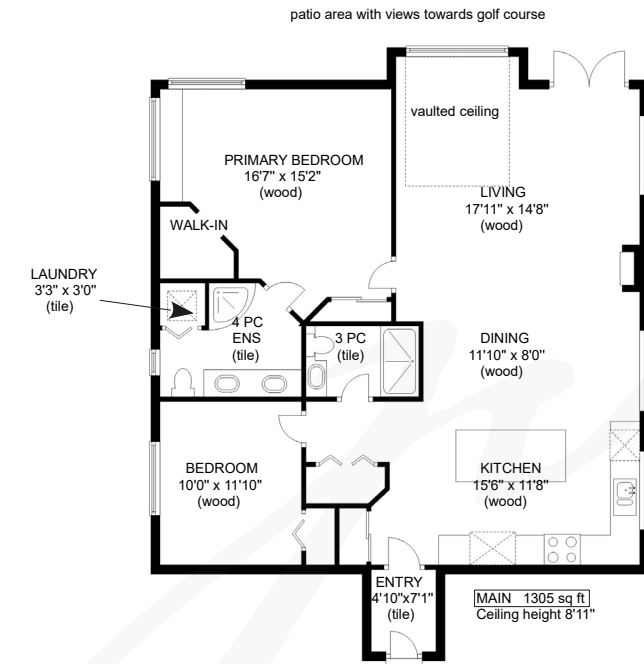
jane denham
REAL ESTATE GROUP



212-3666 Royal Vista Way



212 - 3666 ROYAL VISTA WAY



jane denham
REAL ESTATE GROUP

Prepared for the exclusive use of Jane Denham
RE/MAX Ocean Pacific Realty
250-898-1220

Measurements on the plans are intended for visual reference purposes only and should be verified



Clearview Floor Plans
250 - 331 - 2564

Spectacular location in Corinthia Estates...

Spectacular location in Corinthia Estates, located in the platinum rated Crown Isle Golf Resort. Enjoy turn-key West Coast living in this immaculate, original-owner condo, 1,305 sf, 2 BD/ 2 BA. This premier end unit offers unique privacy surrounded by the 3rd, and 6th fairways. With a newly resurfaced rubberized semi-circular patio, enjoy the full sun with magnificent views, electric awning and defined hedging. Light, bright and spacious with 9' ceilings and a barrel-vaulted Great room with natural gas fireplace. The kitchen is a culinary dream with granite counters, s/s appliances, gas cooktop, wall oven, B/in microwave, wine fridge, expansive fairway views from the window over the sink, pull-out pantry cabinets and an over-sized island with seating. Primary bedroom with built-in desk and work station, luxurious ensuite with dual sinks, stunning granite shower. 3 split pumps for heating & A/C, Acacia wood flooring throughout, single & triple locker, 1 dog or 1 cat.



jane denham
REAL ESTATE GROUP

212-3666 Royal Vista Way | Listed at \$785,000

MLS #: 930481 | 2 Bedrooms | 2 Bathrooms

Total SqFt: 1,305

Strata Fees: \$417/mth

Year Built: 2004

Zoning: CD-1B

Please use the link below for property photos & virtual tour:

www.janedenham.com



c 250.898.1220
jane@janedenham.com
www.janedenham.com

Grace Denham-Clare
c 250.897.8890
grace@janedenham.com



RE/MAX[®]

ocean pacific realty

Each Office Independently Owned and Operated

b 250.339.2021
tf 888.829.7205
282 Anderton Rd.
Comox BC V9M 1Y2